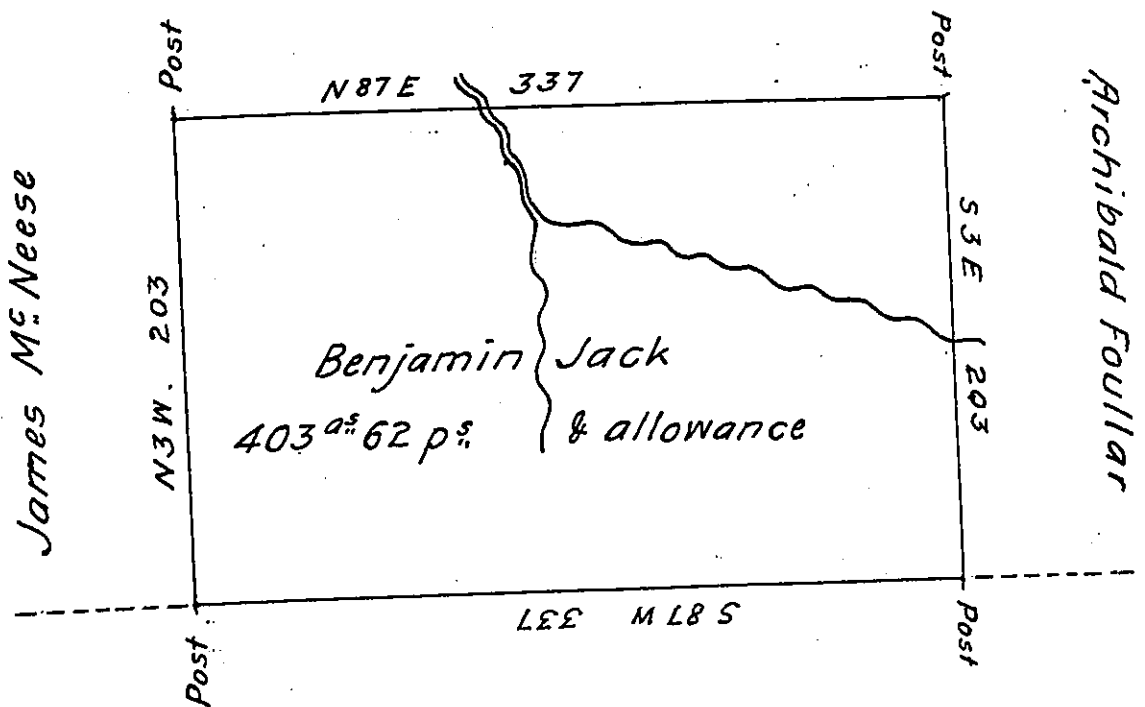


William M^e Neese



Donation Land

The above is a Draft of a Tract of Land which was Surveyed to Benjamin Jack on the 28th day of December 1803 by Virtue of his Warrant dated the 8th day of March 1802 Containing four Hundred and three Acres and 62 perches and Allowance of Six per Cent &^c. Including his Actual Settlement and Improvement Situate on the waters of Slippery Rock Creek in the County of Butler ~

To Samuel Cochran Esquire
 Surveyor General of Pennsylvania.

Ja^s. Irvine D.S.

IN TESTIMONY that the above is a copy of the original remaining on file in the Department of Internal Affairs of Pennsylvania, made conformably to an Act of Assembly approved the 16th day of February, 1833, I have hereunto set my Hand and caused the Seal of said Department to be affixed at Harrisburg, this nineteenth day of June 1905

Loac R. Brown
 Secretary of Internal Affairs.